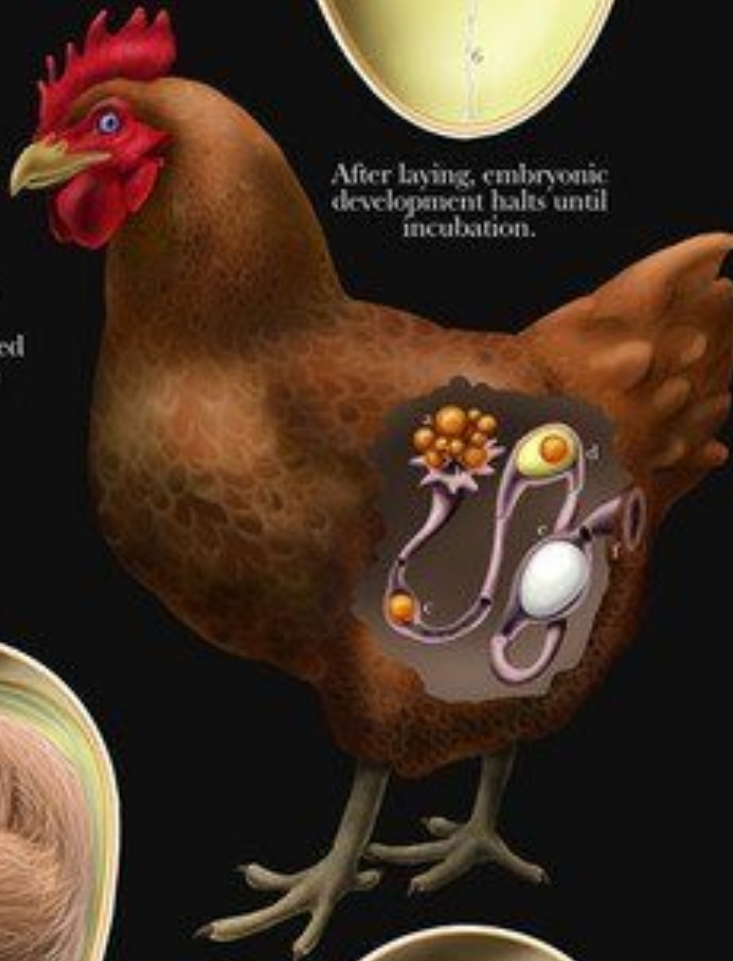


1. Shell
2. Outer Membrane
3. Inner Membrane
4. Albumen- egg whites
5. Air Cell



6. Chalazae- rope of egg whites that connects yolk to inner membrane
7. Yolk
8. Allantois- oxygen supply
9. Amnion



- a. Ovary
- b. Mature ovum enters oviduct
- c. Fertilization
- d. Albumen added
- e. Shell added in uterus
- f. Cloaca

After laying, embryonic development halts until incubation.



Day 5

The heart has started beating. Muscle tension and flexion occurs.



Day 20

Embryo pushes beak into air cell; pulmonary respiration begins. Hatching occurs on day 21.



Day 15

Embryo moves into position for hatching.



Day 10

Beak hardens. Organs are now fully formed.